

July 29<sup>th</sup>, 2024

Welcome to the latest edition of the AW3D newsletter.

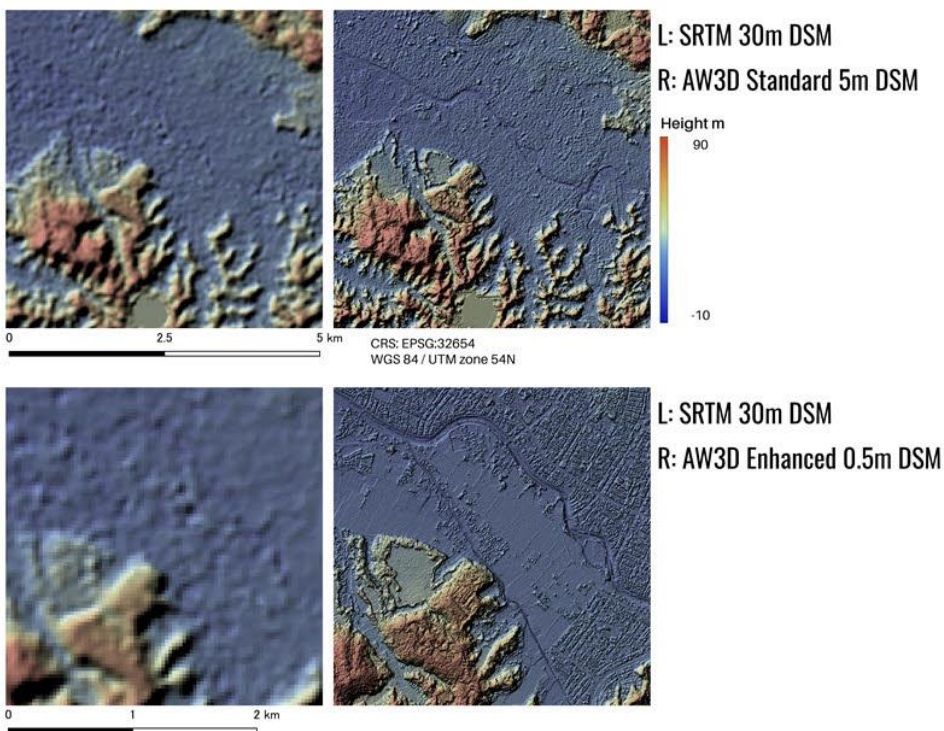
In this issue, we're diving into the world of 3D maps and helping you navigate a crucial decision: selecting the optional resolution for your project.

Thanks for reading,  
AW3D Team

---

### Featured Topic: How to determine optimal resolution of your 3D map

Selecting the right resolution for your project is crucial, as AW3D offers a variety of DEM products with resolutions ranging from a highly detailed 0.5 meters to a broader 5 meters. Here's a helpful example to illustrate the impact of resolution:



*Data Credit:*

*AW3D Standard 5m © JAXA, RESTEC and NTT DATA Japan Corporation*

*AW3D Enhanced © 2024 Maxar Technologies, NTT DATA Japan Corporation*

### Case Study: Chiba Prefecture, Japan

This example from Chiba Prefecture, Japan, clearly demonstrates the connection between data resolution and its applicability.

- **Top Images (5-meter resolution):** At 5 meters, the resolution is sufficient for identifying ground objects at a general scale.
- **Bottom Images (0.5-meter resolution):** At 0.5 meters, the resolution is necessary for detailed analysis, revealing intricate features invisible at a coarser resolution.

Key Points to Consider:

- **Data Size:** 0.5m DEM products, being more detailed, require 32-bit data, resulting in a significant 16MB per square kilometer store requirement.
- **Efficiency:** In contrast, our 5m DEM products utilize a more manageable 16-bit data format, needing only 0.08MB per square kilometer. This makes 5m DEMs more suitable for large-scale simulations due to their smaller file size. \*Even with 5-meter resolution, a paid option supports a 32-bit data format.

It is important to note that higher resolution doesn't always equate to better performance. Selecting the appropriate resolution depends on the specific needs of your project.

### Try Before You Buy: Sample Datasets Available

To help you determine the optimal resolution for your needs, we encourage you to explore our sample suite. This will allow you to experiment with different resolutions and see firsthand which one best suit your project requirements.

< <https://www.aw3d.jp/en/sampleform/> >

-----  
**We welcome your questions, comments, or suggestions!** You can reach us via [here](#).

Thanks for tuning in!

The AW3D sales team

-----



© AW3D sales team – all rights reserved.

This email was sent from an unmonitored mailbox. If you wish to unsubscribe or change your email address, please click [here](#).

Your privacy is important to us. See [our statement of privacy \(PDF\)](#) to learn how to protect your information.